



California
**ELECTRIC
HOMES**



Program Pre-Requisites Photo Guide

Updated August 13, 2025

California Electric Homes (CalEHP) Incentive Program

PHOTO GUIDE FOR REQUIRED PRE-REQUISITES

- Each of items shown in this guide is a mandatory requirement for participation in the CalEHP incentive program and **must be installed as specified. No exceptions.**
- **Omission or improper installation** of any of the required items will result in the project being disqualified from the CalEHP incentive program.
- **Disqualified projects will forfeit all program incentives. No exceptions.**



California
**ELECTRIC
HOMES**

A blue-tinted photograph of a building's wooden frame under construction. The image shows the skeletal structure of a house with vertical studs and horizontal beams. The floor is made of wooden joists, and some lumber is scattered on the ground. The background shows bare trees and a cloudy sky. The text "Water Heating Requirements for Plumbing Installers" is overlaid in white, bold, sans-serif font on the left side of the image.

Water Heating Requirements for Plumbing Installers

Heat Pump Water Heater

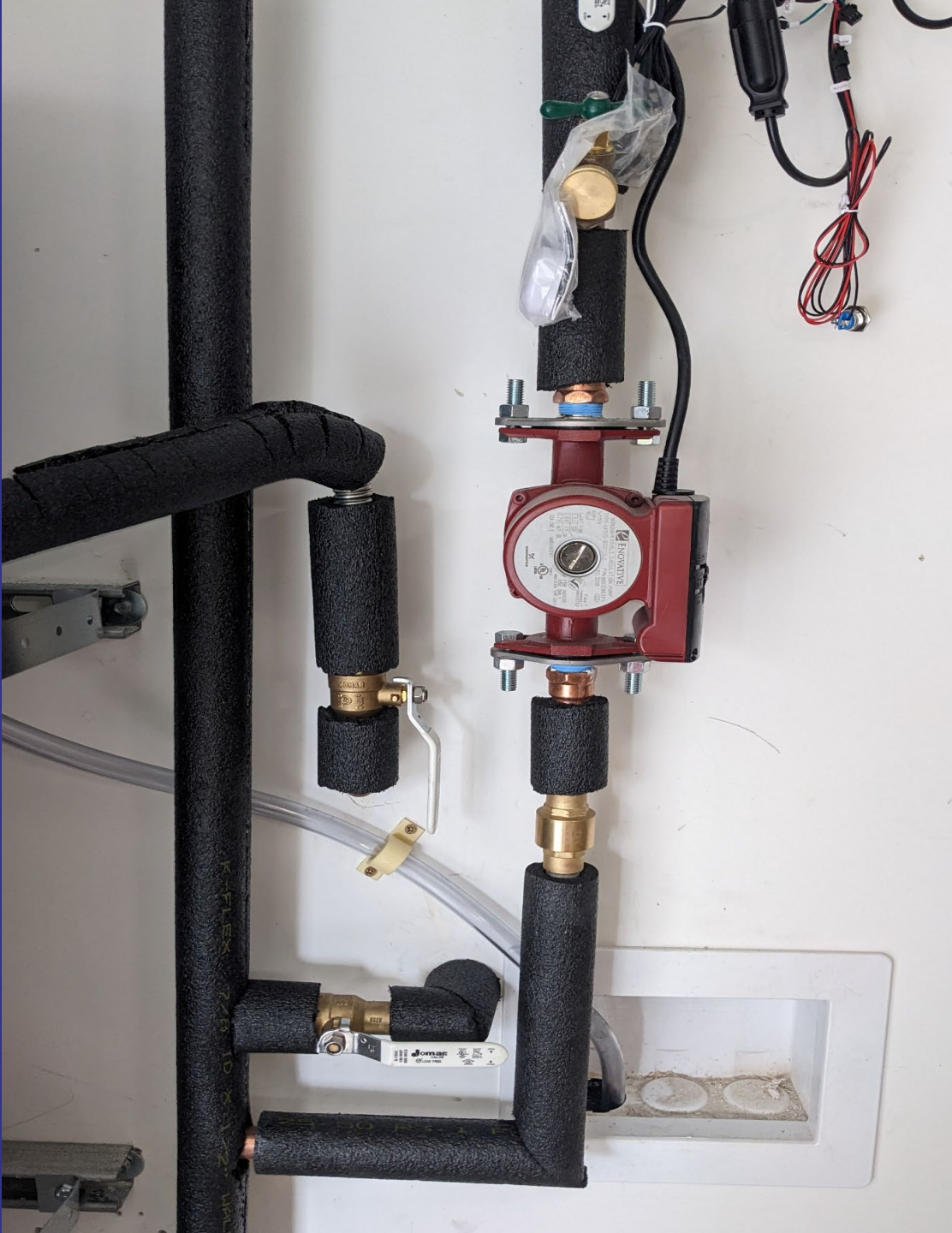
- **All water heating systems must utilize heat pump technology** as the primary method of heating water.
- **Electric resistance water heaters are not eligible** for program participation, regardless of size or configuration.
- **Projects that do not meet the heat pump water heating requirement will be removed from the program** and will forfeit all incentives. No exceptions.





Thermostatic Mixing Valves

- The **Thermostatic Mixing Valve (TMV)** is required to mix hot and cold water to deliver safe water temperatures and prevent scalding at point of use.
- **The TMV must be installed at each unitary water heater**, not at individual faucets or shower heads. Do not confuse TMVs with point-of-use tempering valves.
- **Installation must occur outside the water heater tank**, where the hot water outlet and cold-water inlet lines merge.
- **All TMVs must be ASSE 1017 certified.**



Thermostatic Mixing Valve Exceptions

The program does not require a **Thermostatic Mixing Valve (TMV)** for the following project types:

- **Accessory Dwelling Units (ADUs)**
- **Projects that include a recirculation loop** as part of their water heating system design