



California **ELECTRIC HOMES**



Program Pre-Requisites Photo Guide

Updated August 13, 2025

California Electric Homes (CalEHP) Incentive Program

PHOTO GUIDE FOR REQUIRED PRE-REQUISITES

- Each of items shown in this guide is a mandatory requirement for participation in the CalEHP incentive program and **must be installed as specified. No exceptions.**
- **Omission or improper installation** of any of the required items will result in the project being disqualified from the CalEHP incentive program.
- **Disqualified projects will forfeit all program incentives. No exceptions.**



California
**ELECTRIC
HOMES**

A blue-tinted photograph of a building's wooden frame under construction. The image shows the skeletal structure of a house with vertical studs and horizontal beams. The floor is made of wooden joists, and some lumber is scattered on the ground. The background shows a clear sky and some bare trees. The text "Water Heating Requirements for Plumbing Installers" is overlaid in white, bold, sans-serif font on the left side of the image.

Water Heating Requirements for Plumbing Installers

Heat Pump Water Heater

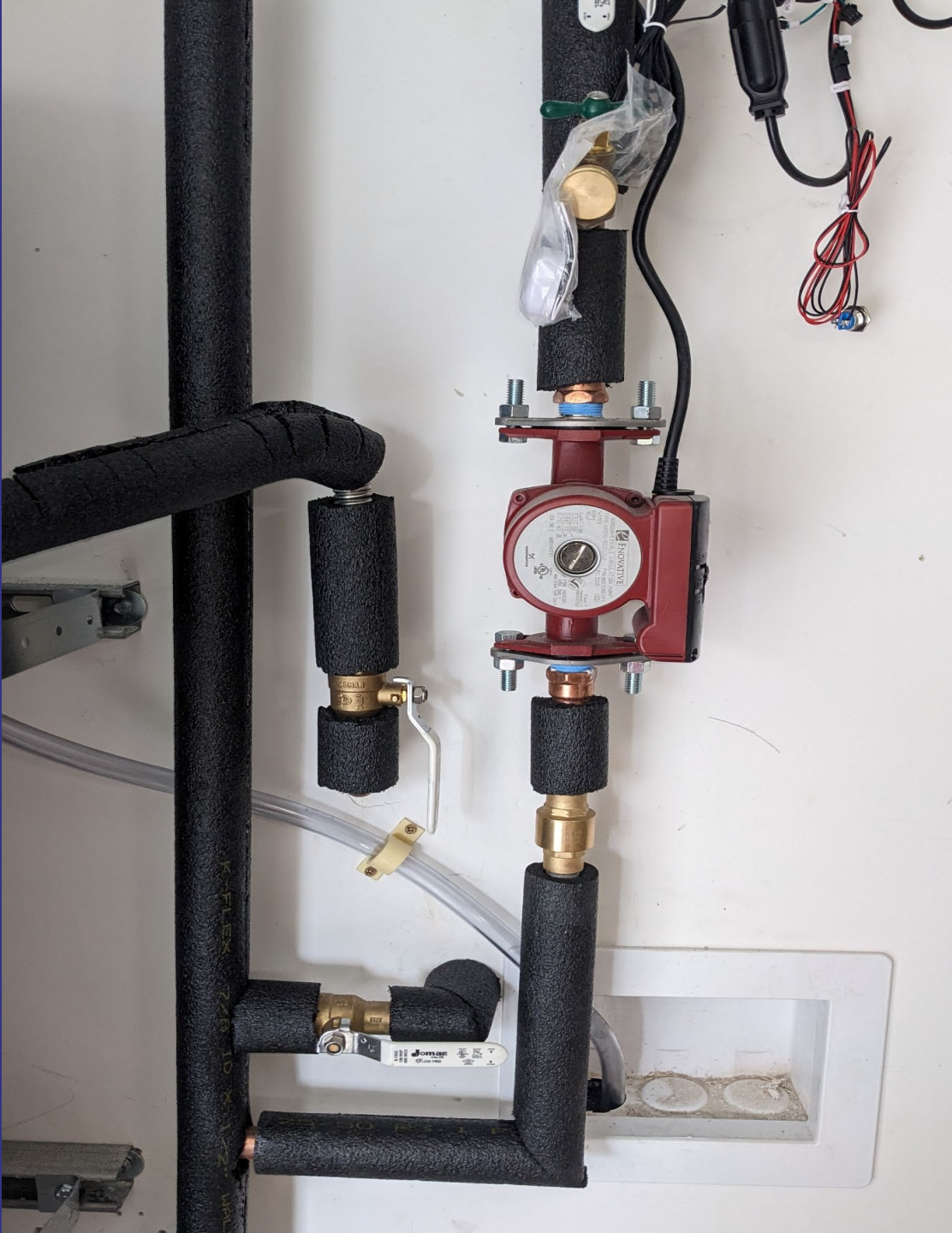
- **All water heating systems must utilize heat pump technology** as the primary method of heating water.
- **Electric resistance water heaters are not eligible** for program participation, regardless of size or configuration.
- **Projects that do not meet the heat pump water heating requirement will be removed from the program** and will forfeit all incentives. No exceptions.





Thermostatic Mixing Valves

- The **Thermostatic Mixing Valve (TMV)** is required to mix hot and cold water to deliver safe water temperatures and prevent scalding at point of use.
- **The TMV must be installed at each unitary water heater**, not at individual faucets or shower heads. Do not confuse TMVs with point-of-use tempering valves.
- **Installation must occur outside the water heater tank**, where the hot water outlet and cold-water inlet lines merge.
- **All TMVs must be ASSE 1017 certified.**



Thermostatic Mixing Valve Exceptions

The program does not require a **Thermostatic Mixing Valve (TMV)** for the following project types:

- **Accessory Dwelling Units (ADUs)**
- **Projects that include a recirculation loop** as part of their water heating system design

An aerial photograph of a new residential development, featuring several two-story houses with brick and siding exteriors. The houses are arranged in a row, with some showing signs of construction. The background is filled with trees and a clear sky. The entire image is overlaid with a semi-transparent purple filter. The text "Space Conditioning Requirements for HVAC Installers" is written in a large, white, sans-serif font across the middle of the image.

Space Conditioning Requirements for HVAC Installers

Heat Pump HVAC

- **All installed HVAC systems must use heat pump technology** as the primary source for both heating and cooling.
- **Systems that rely on electric resistance heating as the primary method** (such as baseboard heaters or electric furnaces) are **not eligible** for the program.



Heat Pump HVAC

- **All installed HVAC systems must use heat pump technology** as the primary source for both heating and cooling.
- **Systems that rely on electric resistance heating as the primary method** (such as baseboard heaters or electric furnaces) are **not eligible** for the program.



Communicating Thermostats

- **Thermostats must be programable and wi-fi enabled**, allowing remote temperature adjustment with a smartphone or other internet-connected device.
- **Thermostats must be Auto Demand Response (ADR) capable.**
- **Projects installing variable capacity heat pumps (VCHP) are exempt** from the communicating thermostat requirement.
- **Tenants are not required to enroll in an ADR program**, but the thermostat must be technically capable of ADR participation to qualify.



A photograph of a new, single-story house with dark siding and white trim. The house features a large multi-paned window on the left, a central front door, and a two-car garage on the right. The roof is dark with white gable accents. In the foreground, there is a construction site with a large pile of dirt and gravel, and a concrete foundation for a lower level. The entire image has a warm, yellowish-orange tint.

Induction Cooking Requirement

Induction Range

- **Induction cooking must be permanently installed** and serve as the only cooking technology for the unit.
- **Portable induction burners are not permitted** and do not satisfy program enrollment requirements.
- **Cooking appliances that rely on electric resistance heating** (e.g. coil or radiant cooktops) **are not eligible** for the program.





Induction Cooktop

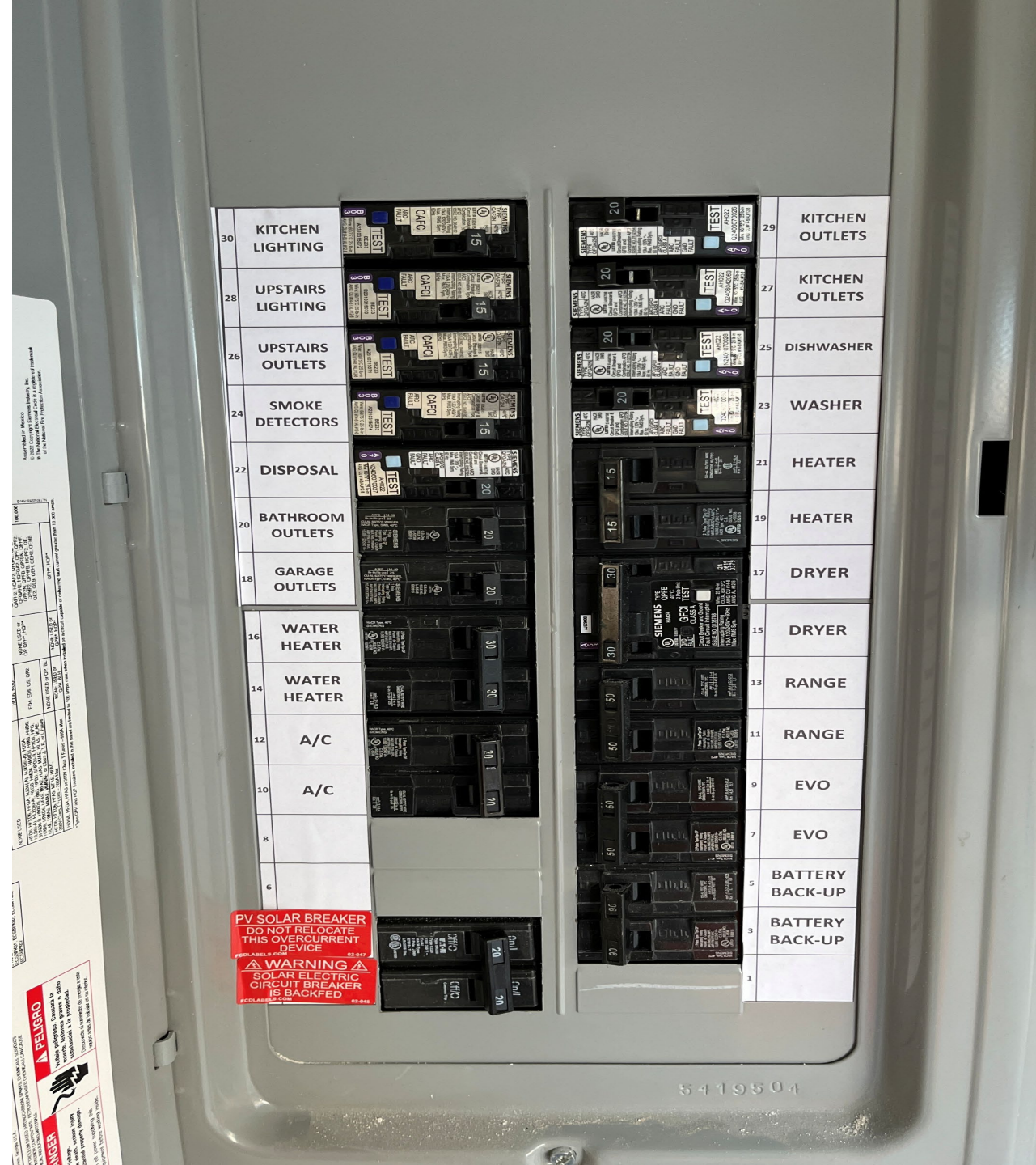
- **Induction cooking must be permanently installed** and serve as the only cooking technology for the unit.
- **Portable induction burners are not permitted** and do not satisfy program enrollment requirements.
- **Cooking appliances that rely on electric resistance heating** (e.g. coil or radiant cooktops) **are not eligible** for the program.

A photograph of a modern multi-story apartment building with light-colored brickwork and glass-enclosed balconies. The building is set against a clear blue sky. In the foreground, there is a landscaped area with green grass, various shrubs, and a large black ceramic pot containing a plant. The entire image is overlaid with a semi-transparent blue filter.

Electrical Panel Requirements for Electricians

Segregated Circuits

- **Segregated circuits are required**, meaning interior lighting loads and plug loads must be placed on separate electrical circuits.
- **No single circuit can serve more than one load type**, each circuit must be dedicated solely to either lighting, plug loads, or a single major appliance.
- **Shared circuits across load types are not permitted** and will result in disqualification from the incentive program.



California
**ELECTRIC
HOMES**